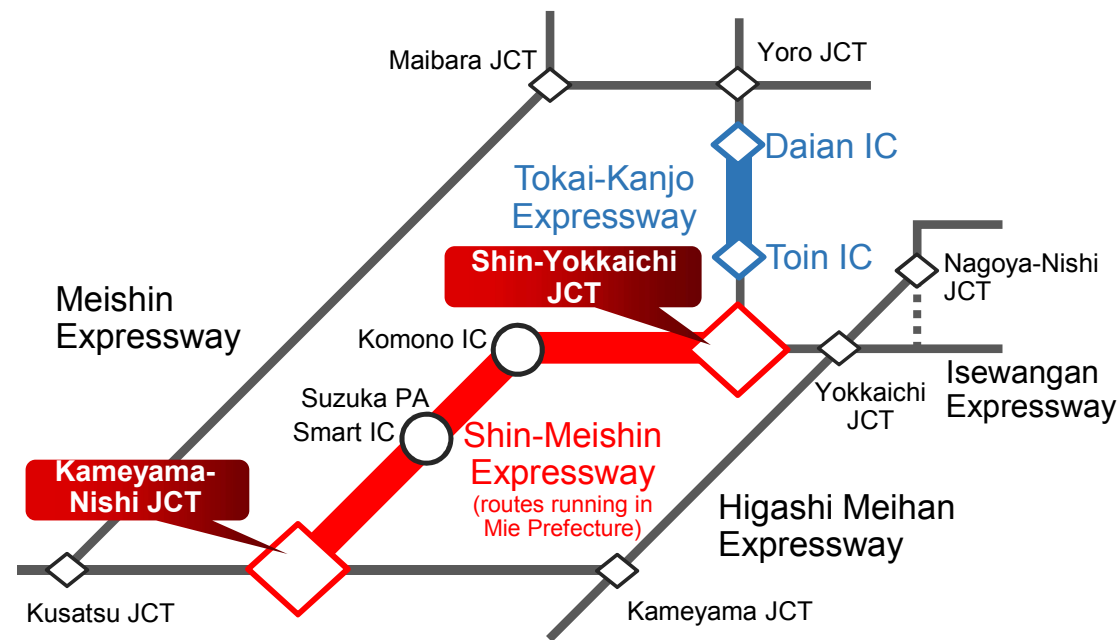
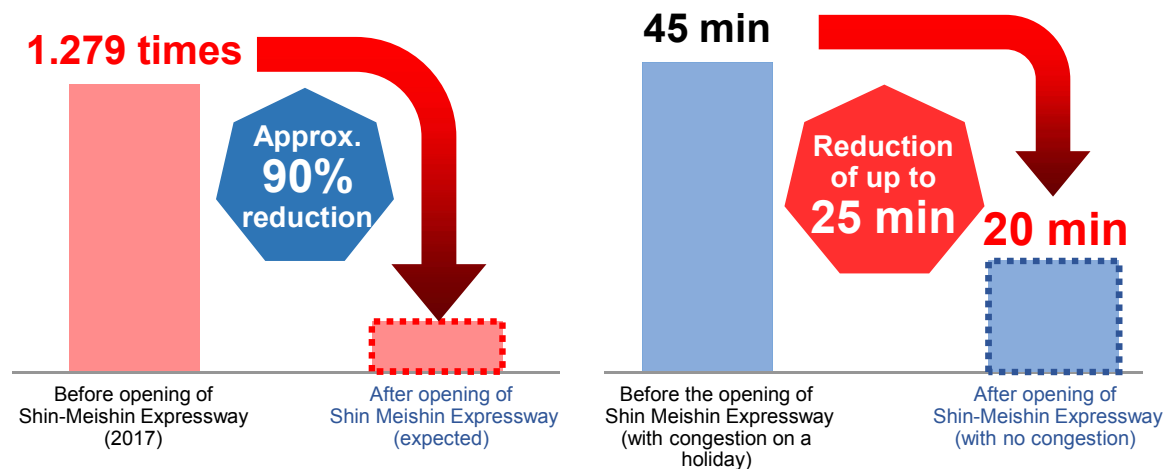


Effects of Road Construction on Mie's Economy



Number of occurrences of traffic congestion on the Higashi Meihan Expressway (Yokkaichi JCT – Kameyama JCT)

Time required to drive between junctions



* Source: Website of Central Nippon Expressway Company Ltd.

Effects of Road Construction on Mie's Economy

Manufacturing industries are flourishing in Mie Prefecture

<National ranking>

Value of manufactured goods shipment
(Business establishments with four employees or more)
10th
* Source: METI in 2016

Factory site area
(1,000 m² or more)
2nd
* Source: METI, 2016

Opening of Shin-Meishin Expressway and extension of Tokai-Kanjo Expressway

Kansai region

Mie Prefecture

Improved accessibility both eastward and westward

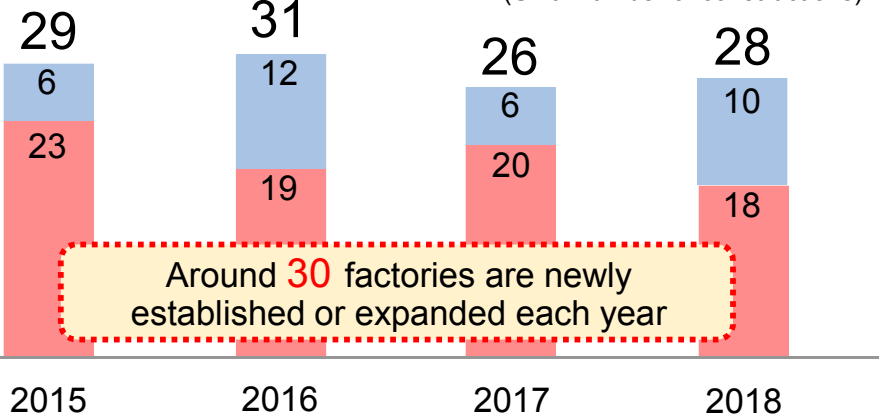
Chubu region
Kanto region

Trends of factory construction by companies from outside Mie Prefecture (new construction and expansion)

Newly established factories

Expanded factories

(Unit: Number of constructions)



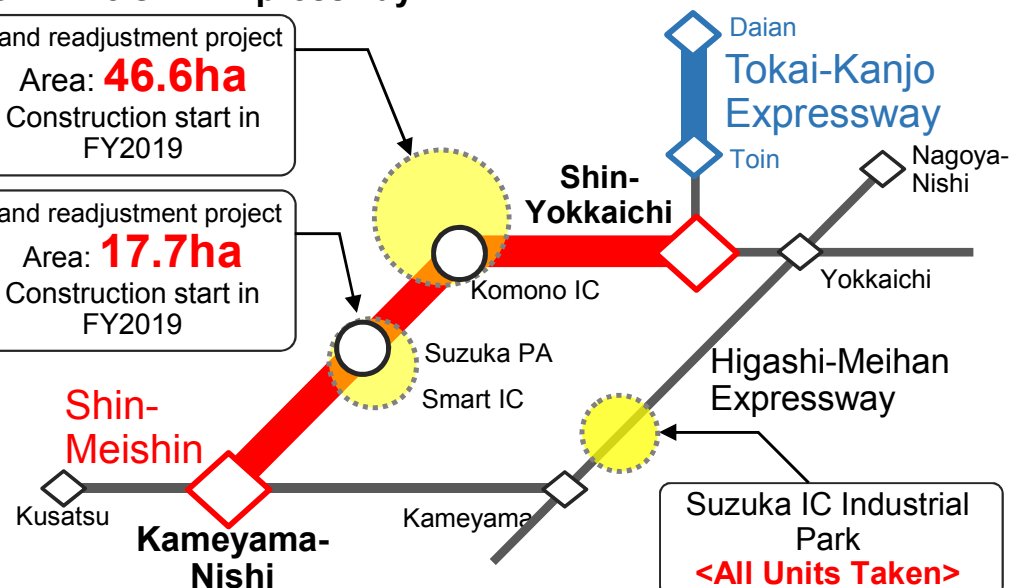
Around 30 factories are newly established or expanded each year

※Prepared based on data on factory location trends by year and area released by Mie Prefecture

Development of industrial park anticipating opening of the Shin-Meishin Expressway

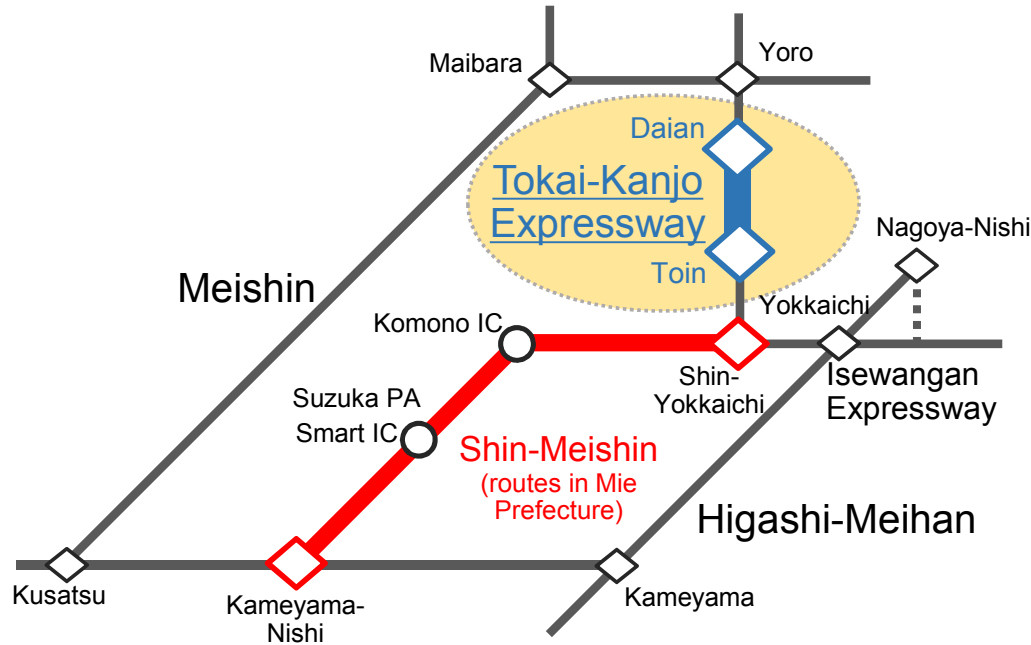
Land readjustment project
Area: **46.6ha**
Construction start in FY2019

Land readjustment project
Area: **17.7ha**
Construction start in FY2019

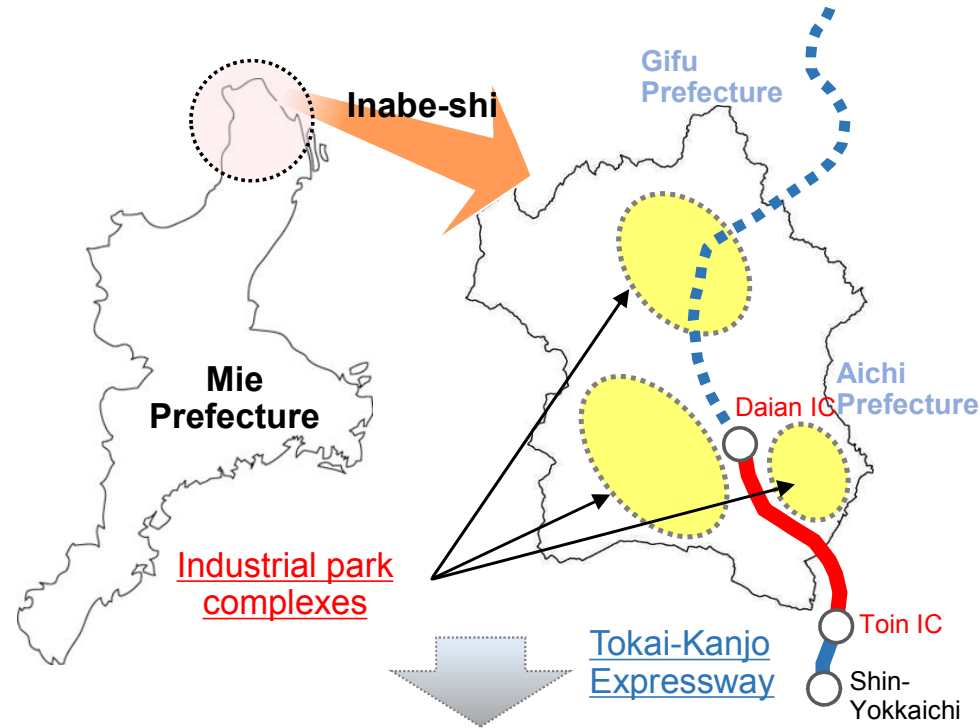


Effects of Road Construction on Mie's Economy

Economic benefits of extending the Tokai-Kanjo Expressway

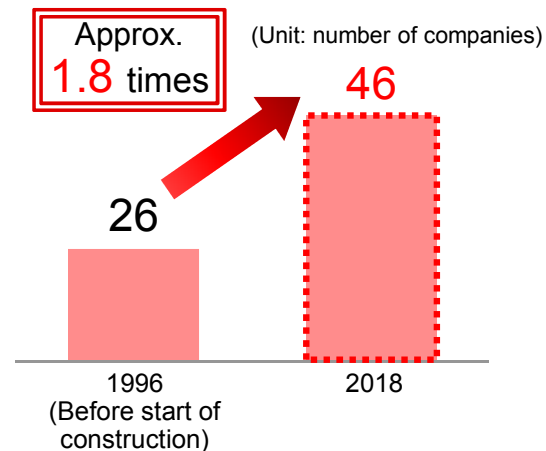


Areas along the Tokai-Kanjo Expressway (Inabe-shi)



Relocation and construction of new Inabe Branch (May 27, 2019)

Number of companies that have located their factories in industrial park



Number of employees at companies located in industrial parks

