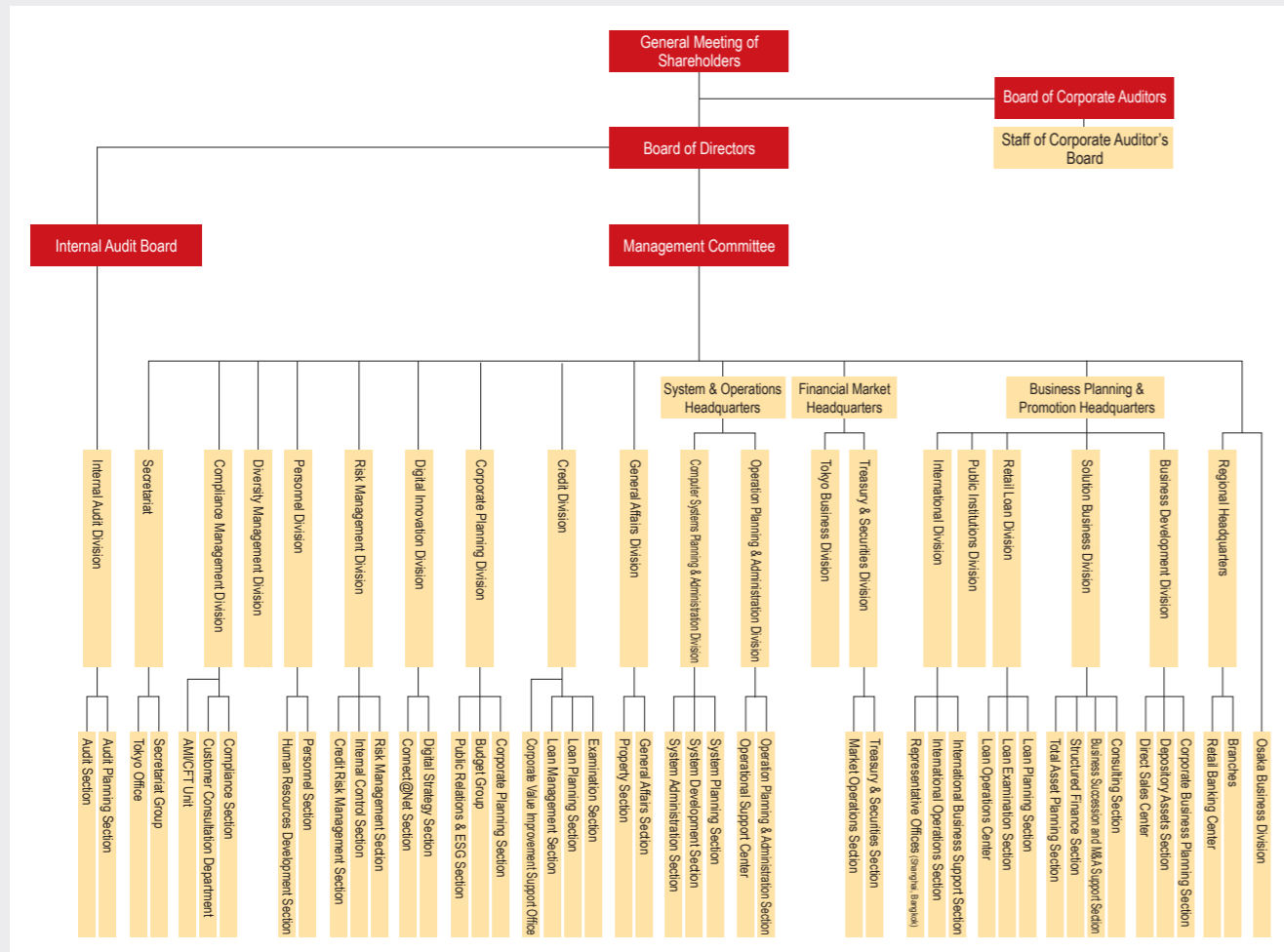


Corporate Data

Organizational Structure/List of Group Companies

Organizational structure

(As of June 23, 2021)



Group companies

Company name	Address	Main fields of business
Hyakugo Card Co., Ltd.	Sakaemachi Bldg., 3-123-1 Sakaemachi, Tsu	Credit card services and credit guarantee services
Hyakugo Leasing Company Limited	Sakaemachi Bldg., 3-123-1 Sakaemachi, Tsu	Lease services
Hyakugo Research Institute Company Limited	21-27, Iwata, Tsu	Regional industry survey and consulting-related services
Hyakugo Computer Soft, Ltd.	21-27, Iwata, Tsu	Computer information processing services
Hyakugo Securities Company Limited	21-27, Iwata, Tsu	Financial instruments transaction services
Hyakugo Business Service Company Limited	33-21, Honmachi, Tsu	Examination and arrangement services of cash, etc.
Hyakugo Kanri Service Company Limited	7-6-70, Takajaya, Tsu	Printing, storage, administrative services for documents, account books, etc.
Hyakugo Property Research Company Limited	21-27, Iwata, Tsu	Collateralized real estate survey and appraisal activities
Hyakugo Office Service Company Limited	21-27, Iwata, Tsu	Concentrated management and administrative services for bank notes, bonds, etc.
Hyakugo Staff Service Company Limited	21-27, Iwata, Tsu	Employment placement and labor management services
Hyakugo Mirai Investment Co., Ltd.	Sakaemachi Bldg., 3-123-1 Sakaemachi, Tsu	Formation and operation of investment limited partnership (fund)

Profile and Stock Information

Profile (As of March 31, 2021)

Name:	The Hyakugo Bank, Ltd.												
Established:	November 19, 1878												
Head office location:	21-27, Iwata, Tsu, Mie Prefecture												
Representative:	President, Toshiyasu Ito												
Paid-in capital:	¥20.0 billion												
Number of employees:	2,380												
Number of branches:	143 Branches, 2 Overseas Representative Offices												
Breakdown	<table border="1"> <tr> <td>Mie Prefecture</td> <td>86 Branches</td> </tr> <tr> <td></td> <td>33 Sub-branches</td> </tr> <tr> <td>Aichi Prefecture</td> <td>21 Branches</td> </tr> <tr> <td>Wakayama Prefecture</td> <td>1 Branch</td> </tr> <tr> <td>Others</td> <td>2 Branches (Tokyo, Osaka)</td> </tr> <tr> <td>Overseas</td> <td>2 (Shanghai, Bangkok)</td> </tr> </table>	Mie Prefecture	86 Branches		33 Sub-branches	Aichi Prefecture	21 Branches	Wakayama Prefecture	1 Branch	Others	2 Branches (Tokyo, Osaka)	Overseas	2 (Shanghai, Bangkok)
Mie Prefecture	86 Branches												
	33 Sub-branches												
Aichi Prefecture	21 Branches												
Wakayama Prefecture	1 Branch												
Others	2 Branches (Tokyo, Osaka)												
Overseas	2 (Shanghai, Bangkok)												

Non-branch ATM locations:	196
Convenience store ATM locations (E-net, SEVEN BANK, LAWSON BANK):	49,481
Total assets:	¥7,426.2 billion
Deposits:	¥5,387.9 billion
Loans and bills discounted:	¥3,988.3 billion
Non-consolidated capital adequacy ratio:	10.11% (Domestic standard)
Consolidated capital adequacy ratio:	10.57% (Domestic standard)
Rating:	A (Rating and Investment Information, Inc.)
Number of outstanding shares:	254,119 thousand shares

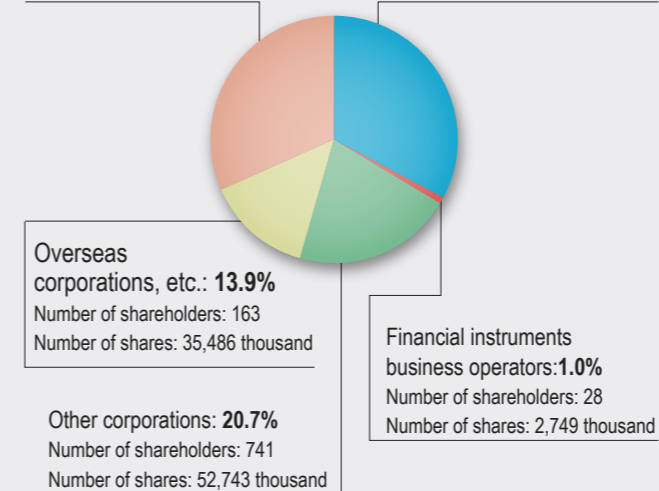
Stock information (As of March 31, 2021)

■ Status of shares

Total number of authorized shares	396,000 thousand
Total number of outstanding shares	254,119 thousand
Number of shareholders	17,841
Stock exchanging listing	Tokyo, Nagoya
Securities code	8368

■ Shareholder composition

Individuals and others: 31.4%	Financial institutions: 32.7%
Number of shareholders: 16,858	Number of shareholders: 51
Number of shares: 79,849 thousand	Number of shares: 83,290 thousand



■ Major shareholders

Name of shareholder	Number of shares (thousands)	Voting rights (%)
The Master Trust Bank of Japan, Ltd. (Trust Account)	11,163	4.39
Meiji Yasuda Life Insurance Company	10,093	3.97
Custody Bank of Japan, Ltd. (Trust Account)	9,211	3.62
Nippon Life Insurance Company	8,396	3.30
NORTHERN TRUST CO. (AVFC) SUB A/C USL NON-TREATY	6,836	2.69
Hyakugo Bank Employees' Shareholding Association	5,644	2.22
MUFG Bank, Ltd.	4,222	1.66
The Master Trust Bank of Japan, Ltd. (Toyota Motor Account)	3,986	1.56
SHIMIZU CORPORATION	3,930	1.54
Sompo Japan Insurance Inc.	3,748	1.47
Top 10 total	67,233	26.45

Notes: 1 Amounts of the number of shares and voting rights are rounded down to the unit displayed.
 2 Voting rights are calculated by dividing the number of shares held by the total number of outstanding shares.

■ Guidance on stock

Shareholder's register administrator	Mitsubishi UFJ Trust and Banking Corporation
Account management organization for special accounts	
Contact information	TEL: 0120-232-711 (Toll free)