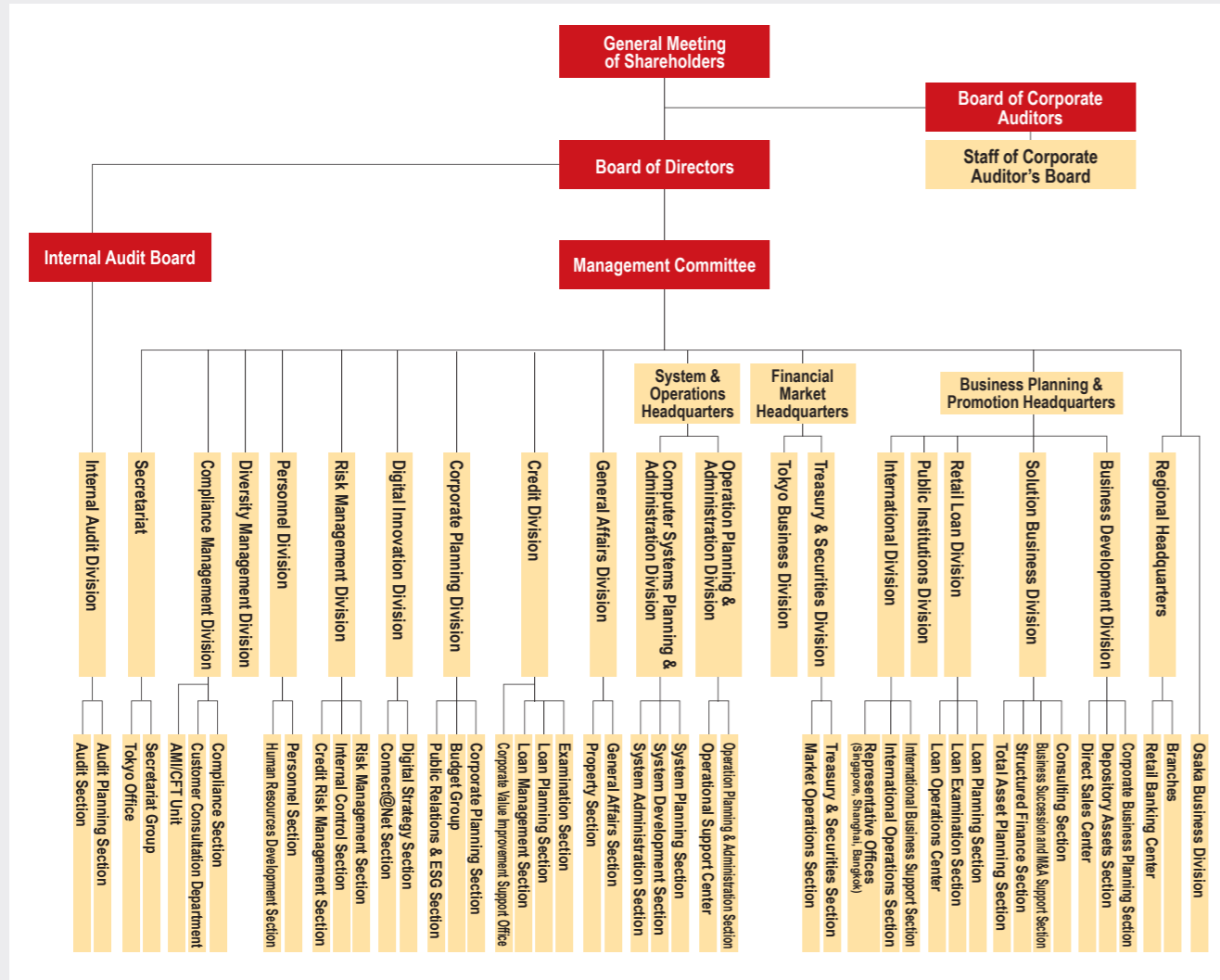


# Corporate Data

## Organizational Structure/List of Group Companies

### Organizational structure

(As of June 23, 2020)



### Group companies

Company name	Address	Main fields of business
Hyakugo Card Co., Ltd.	3-123-1 Sakaemachi Bldg. Sakaemachi, Tsu	Credit card services and credit guarantee services
Hyakugo Leasing Company Limited	3-123-1 Sakaemachi Bldg. Sakaemachi, Tsu	Lease services
Hyakugo Research Institute Company Limited	21-27, Iwata, Tsu	Regional industry survey and consulting-related services
Hyakugo Computer Soft, Ltd.	21-27, Iwata, Tsu	Computer information processing services
Hyakugo Securities Company Limited	21-27, Iwata, Tsu	Financial instruments transaction services
Hyakugo Business Service Company Limited	33-21, Honmachi, Tsu	Examination and arrangement services of cash, etc.
Hyakugo Kanri Service Company Limited	7-6-70, Takajaya, Tsu	Printing, storage, administrative services for documents, account books, etc.
Hyakugo Property Research Company Limited	21-27, Iwata, Tsu	Collateralized real estate survey and appraisal activities
Hyakugo Office Service Company Limited	21-27, Iwata, Tsu	Concentrated management and administrative services for bank notes, bonds, etc.
Hyakugo Staff Service Company Limited	21-27, Iwata, Tsu	Employment placement and labor management services
Hyakugo Mirai Investment Co., Ltd.	3-123-1 Sakaemachi Bldg. Sakaemachi, Tsu	Formation and operation of investment limited partnership (fund)

## Profile and Stock Information

### Profile (As of March 31, 2020)

<b>Name:</b>	The Hyakugo Bank, Ltd.
<b>Established:</b>	November 19, 1878
<b>Head office location:</b>	21-27, Iwata, Tsu, Mie Prefecture
<b>Representative:</b>	President, Toshiyasu Ito
<b>Paid-in capital:</b>	¥20.0 billion
<b>Number of employees:</b>	2,399
<b>Number of branches:</b>	139 Branches, 3 Overseas Representative Offices
<b>Breakdown</b>	
Mie Prefecture	85 Branches 30 Sub-branches
Aichi Prefecture	21 Branches
Wakayama Prefecture	1 Branch
Others	2 Branches (Tokyo, Osaka)
Overseas	3 Representative Offices (Singapore, Shanghai, Bangkok)

<b>Non-branch ATM locations:</b>	205
<b>Convenience store ATM locations (E-net, SEVEN BANK, LAWSON BANK):</b>	49,068
<b>Total assets:</b>	¥6,423.3 billion
<b>Deposits:</b>	¥4,950.8 billion
<b>Loans and bills discounted:</b>	¥3,631.0 billion
<b>Non-consolidated capital adequacy ratio:</b>	10.07% (Domestic standard)
<b>Consolidated capital adequacy ratio:</b>	10.41% (Domestic standard)
<b>Rating:</b>	A (Rating and Investment Information, Inc.)
<b>Number of outstanding shares:</b>	254,119 thousand shares

Note: The Singapore Representative Office is planned for dissolution in August 31, 2020.

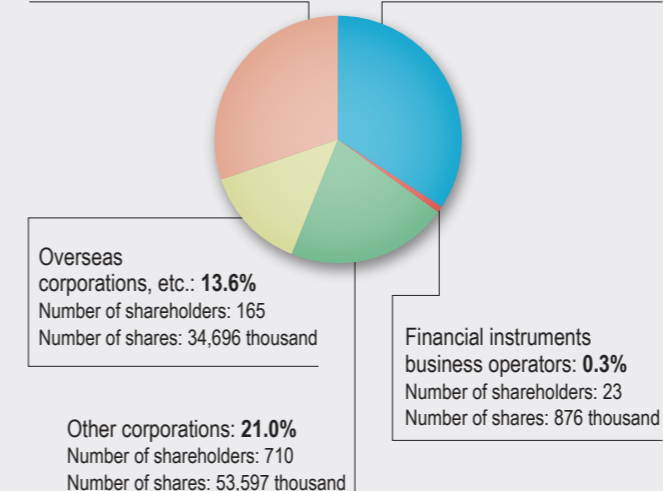
### Stock information (As of March 31, 2020)

#### ■ Status of shares

Total number of authorized shares	396,000 thousand
Total number of outstanding shares	254,119 thousand
Number of shareholders	15,019
Stock exchanging listing	Tokyo, Nagoya
Securities code	8368

#### ■ Shareholder composition

Individuals and others: <b>30.1%</b>	Financial institutions: <b>34.7%</b>
Number of shareholders: 14,067	Number of shareholders: 54
Number of shares: 76,659 thousand	Number of shares: 88,289 thousand



#### ■ Major shareholders

Name of shareholder	Number of shares (thousands)	Voting rights (%)
Meiji Yasuda Life Insurance Company	10,093	3.97
The Master Trust Bank of Japan, Ltd. (Trust Account)	10,091	3.97
Japan Trustee Services Bank, Ltd. (Trust Account)	9,485	3.73
Nippon Life Insurance Company	8,396	3.30
Japan Trustee Services Bank, Ltd. (Trust Account 9)	7,501	2.95
Hyakugo Bank Employees' Shareholding Association	5,613	2.20
MUFG Bank, Ltd.	4,222	1.66
The Master Trust Bank of Japan, Ltd. (Toyota Motor Account)	3,986	1.56
SHIMIZU CORPORATION	3,930	1.54
Sompo Japan Nipponkoa Insurance Inc.	3,748	1.47
Top 10 total	67,069	26.39

Notes: 1. Amounts of the number of shares and voting rights are rounded down to the unit displayed.  
2. Voting rights are calculated by dividing the number of shares held by the total number of outstanding shares.  
3. Sompo Japan Nipponkoa Insurance Inc. changed its name to Sompo Japan Insurance Inc. on April 1, 2020.

#### ■ Guidance on stock

<b>Shareholder's register administrator</b>	Mitsubishi UFJ Trust and Banking Corporation
<b>Account management organization for special accounts</b>	
<b>Contact information</b>	TEL: 0120-232-711 (Toll free)